



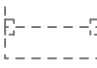


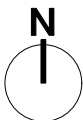
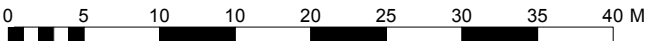


Plot 4		Forest Road, Piddington, NN7 2DA, Scale 1:500 at A4			
Plot Area	0.26 acres (1037m <sup>2</sup> )		Build Zone		Water Supply
Maximum Internal Floorspace	4843ft <sup>2</sup> (450m <sup>2</sup> )		Plot Ownership Boundary		Electric Supply
Maximum Storeys	No more than 2 Storey		Example Building Layout		Telecomm Supply
					Drainage Connection



Plot 4  
Scale: 1:500



LANDSTRÖM